



Visitors Package

SERC Address:

2815 Coliseum Centre Drive
Suite 500
Charlotte, NC 28217

704-357-7372

www.serc1.org

Office Hours: 7:30 a.m. – 5:00 p.m.

Time Zone: Eastern

Meeting Staff:

August McClaine – Manager, Member Services

Matt Bigg – Meeting Planner

Laura Farris – Receptionist



CHARLOTTE

Charlotte is the largest city in North Carolina. In 2010, Charlotte's population was estimated by the Charlotte Chamber of Commerce at 756,912, making it the 18th largest city in the United States based on population.

Charlotte has become a major U.S. financial center, and is now the second largest banking center in the United States after New York City. Charlotte is also home of the Carolina Panthers, the Charlotte Bobcats, the NASCAR Hall of Fame, and the U.S. National Whitewater Center.

Charlotte has a humid subtropical climate and is situated halfway between the Appalachian Mountains and the Atlantic Ocean, between Washington, D.C. and Atlanta. Charlotte is located several miles east of the Catawba River and southeast of Lake Norman, the largest man-made lake in North Carolina. Lake Wylie and Mountain Island Lake are two smaller man-made lakes located near the city.

TRANSPORTATION

The SERC office is approximately 3 miles from the Charlotte-Douglas International Airport (CLT). Most of the hotels listed below offer complimentary shuttle to and from the airport.

LODGING

Please note that the hotels listed below provide complimentary shuttle transportation to and from Charlotte/Douglas International Airport, as well as complimentary transportation to the SERC office. Approximate drive time from Charlotte/Douglas International Airport, to the hotels that are listed below is ten minutes.

Hyatt Place Charlotte Airport/Tyvola Road

2950 Oak Lake Boulevard
Charlotte, NC 28208
(704) 423-9931
Ask for the SERC Rate
Use Rate Code: SRBI
Rate: \$99/night

Complimentary In Room Internet Access
Complimentary Continental Breakfast
Complimentary USA Today Newspaper in Lobby
Complimentary Shuttle Pick Up to/from Airport
and SERC Office Shuttle Service
Distance from Hotel to the Office: .7 miles



Doubletree Charlotte Airport Hotel

2600 Yorkmont Road
Charlotte, NC 28208
(704) 357-9100

Ask for SERC Rate

Rate: \$114/Night

Call 800-222-TREE and use the
SERC Corporate ID 0002696456

Complimentary Coffee in the Morning

Complimentary USA Today Delivered to Your Room

Distance from Hotel to the Office: .7 miles

Homewood Suites by Hilton Charlotte Airport

2770 Yorkmont Road
Charlotte, NC 28208
(704) 357-0500

Ask for SERC Rate

Rate: \$119/night

Complimentary Breakfast Each Morning

Complimentary Dinner Monday - Friday

Complimentary In Room Internet Access

Distance from Hotel to the Office: .8 miles

Renaissance Charlotte Suites Hotel

2800 Coliseum Centre Drive
Charlotte, NC 28217
(704) 357-1414

Ask for SERC Rate

Rate: \$135.00/night

If you have difficulty reserving a room at any of the above hotels, please contact our Meeting Planner, Matt Bigg at 704-940-8232 for assistance.



MEALS

Harper's

Charlotte offers two convenient locations:

Southpark at Fairview and Sharon Roads and in Pineville at Carolina Place Mall

Southpark

6518 Fairview Road
Charlotte, NC 28210
(Across from Southpark Mall)
(704) 366-6688

Pineville

11059 Caroline Place Parkway
Pineville, NC 28134
(Located at Carolina Place Mall)
(704) 541-5255

Brio Tuscan Grille

Southpark

4720 Piedmont Row Drive
Charlotte, NC 28210
(704) 571-4214

Ruth's Chris Steak House

Southpark

6000 Fairview Road
Charlotte, NC 28210
(704) 556-1115

Maggiano's Little Italy

Southpark

4400 Sharon Road
Charlotte, NC 28211
(704) 916-2300

Upstream

Southpark at Phillips Place

6902 Phillips Place Court
Charlotte, NC 28210
(704) 556-7730

If you would like a complete list of Charlotte area restaurants, contact Laura Farris at lfarris@serc1.org or at (704) 357-7372.

MEETING ACCOMODATIONS

SERC has the following conference rooms available for use:

Board Room

Comfortably Seats 13

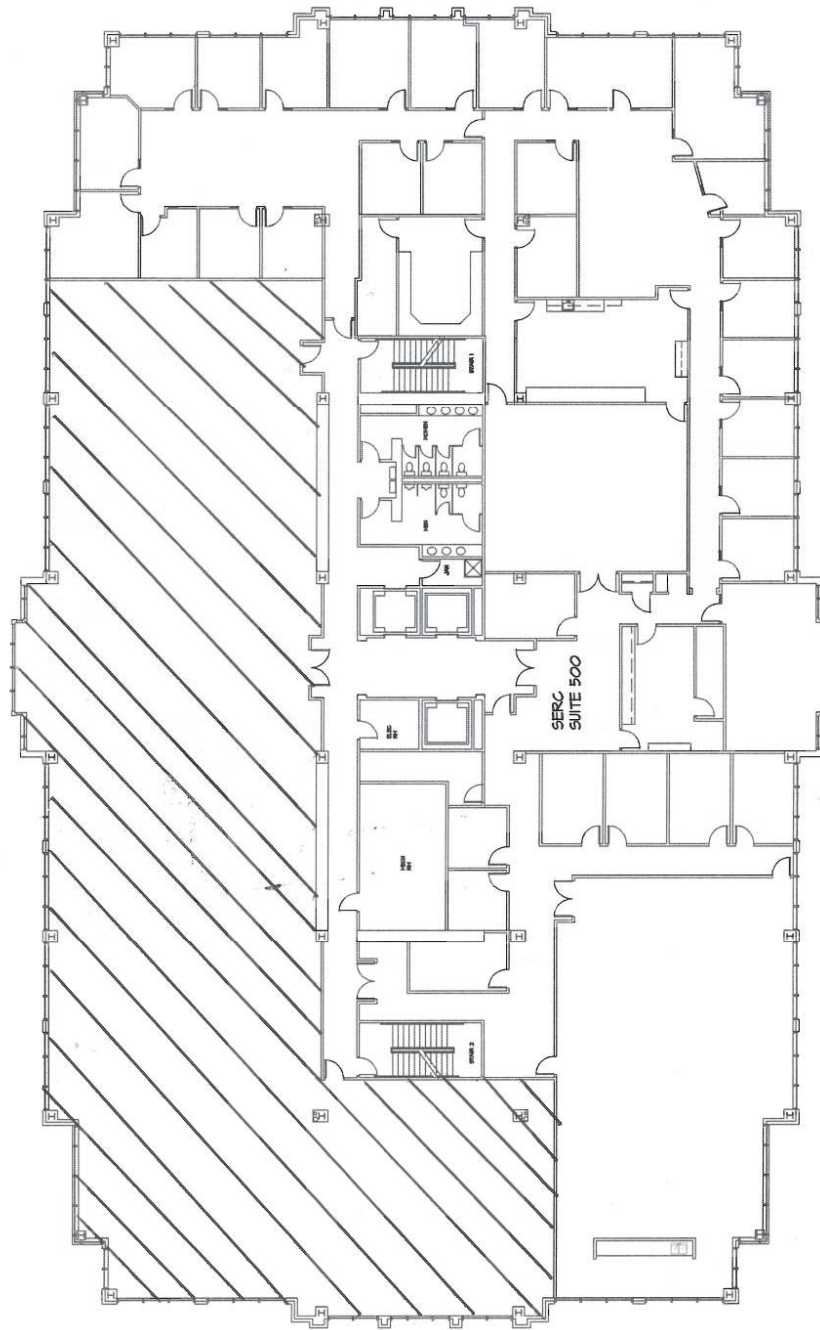
Training Room

Comfortably Seats 26

Large Conference Room

Comfortably Seats 60 (U Shape)

Comfortably Seats 72 (Classroom Style)



Six Coliseum Centre

Fifth Floor



ACCESS TO SERC FACILITIES

Visitors will be required to check in at the front desk and wear the appropriate visitor's badge. Any employees leaving the public area will be required to be escorted by a SERC employee at all times.

Please return your visitor badge when you are leaving the SERC office for the day. If you are returning the next day, a new badge will be given to you upon check in at the front desk the next day.